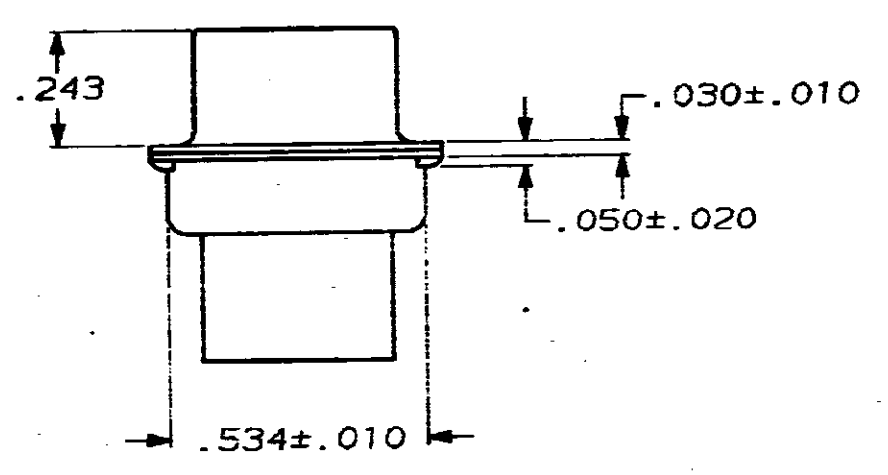
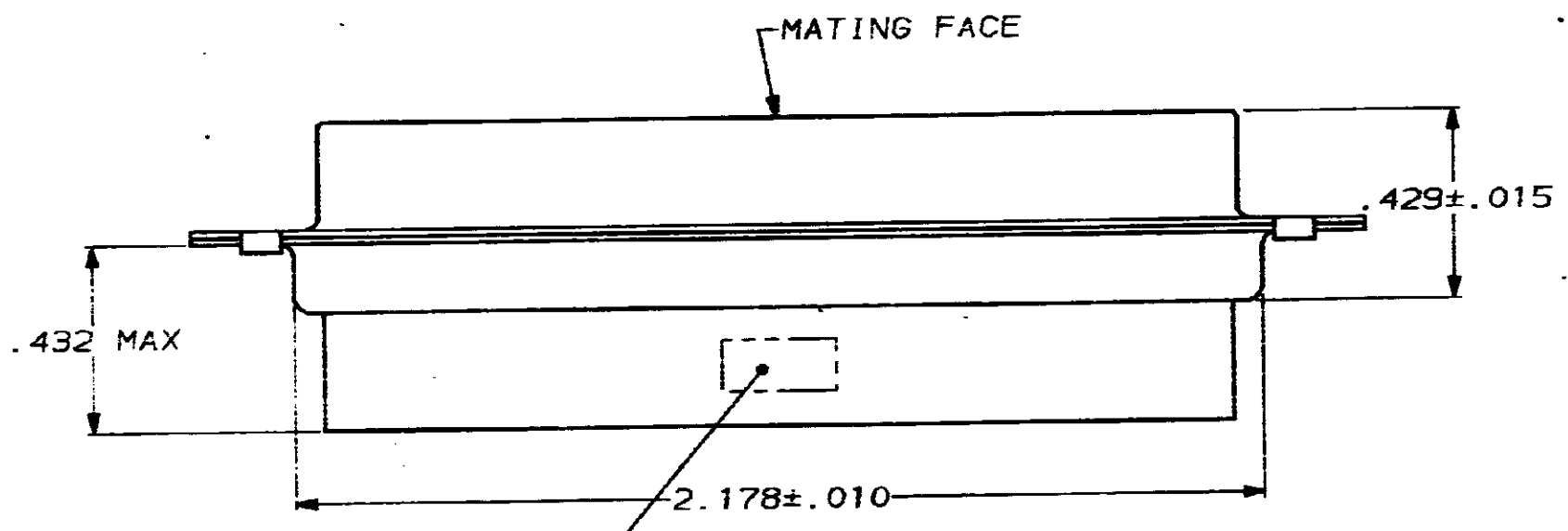
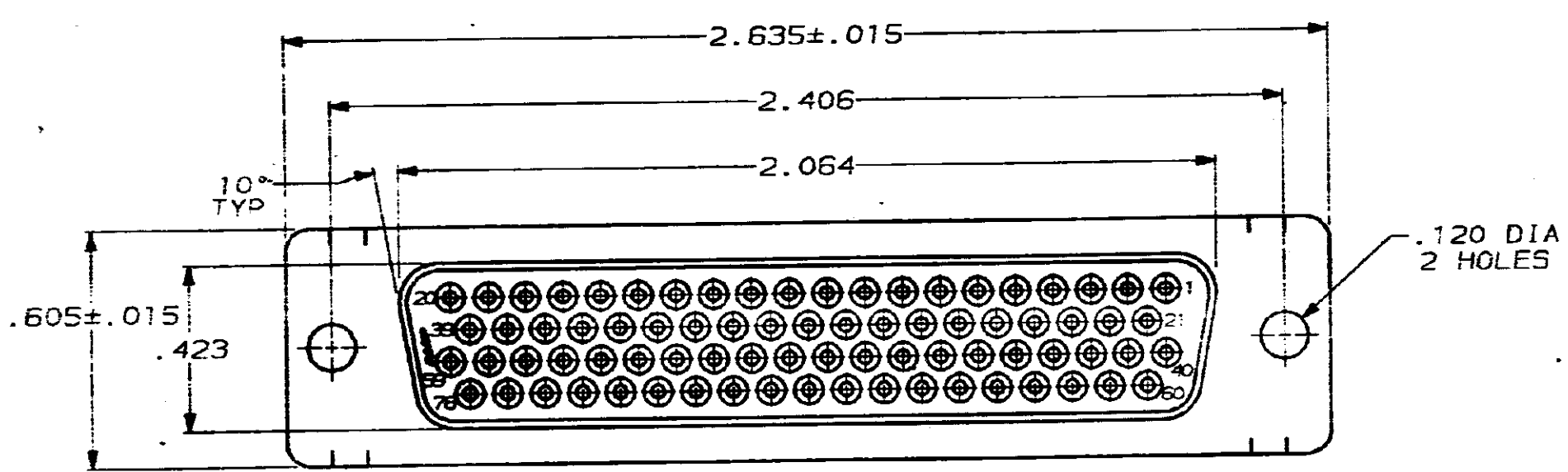


DRAWING MADE IN THIRD ANGLE PROJECTION  
 THIS DRAWING IS UNPUBLISHED. RELEASED FOR PUBLICATION .19  
 © COPYRIGHT 19 BY AMP INCORPORATED. ALL INTERNATIONAL RIGHTS RESERVED.

LOC		DIST		ZONE		LTR		REVISIONS		DATE	APPD
BD	39							0	REL WAS 87-4870-17	-	-



AMP, PART NO & DATE CODE, MARKED IN AREA INDICATED, ON FAR SIDE

- CONNECTOR ACCEPTS SIZE 22 DF SOCKET CONTACTS, RETENTION TINES ARE AN INTEGRAL PART OF INSERT.
- FLAME RETARDANT 94V-0 RATED GLASS FILLED NYLON, COLOR: BLACK.
- STEEL PER ASTM A109.
- TIN PLATED PER MIL-T-10727.

748569-1  
PART NO

DO NOT SCALE PRINT. UNLESS SPECIFIED DIMENSIONS IN INCHES TOLERANCES ON: 2 PLC DEC = - 3 PLC DEC = .005 ANGLES ± 2°	DR <i>C. Richard</i> 1/12/88 CHK <i>W.C. Kender</i> 1-18-88 APPD <i>S. P. ...</i> 1/14/88 APPD <i>V. Kumar</i> 1/19/88	AMP INCORPORATED Harrisburg, Pa. 17105
MATERIAL MOLDED PARTS: $\Delta$ SHELLS: $\Delta$	PRODUCT SPEC -	NAME RECEPTACLE CONNECTOR, SIZE 5, 78 POSN, AMPLIMITE® HDP-22
FINISH SHELLS: $\Delta$	APPLICATION SPEC -	SIZE <b>C</b> FSCM NO 00779 DRAWING NO 748569
	WEIGHT -	SCALE 3:1 SHEET 1 OF 1

CUSTOMER DRAWING